

IMPULSE™ LTX  
Multimedia Whiteboard System



A visual communication system that transforms the way people learn and work



# IMPULSE™ LTX

## Multimedia Whiteboard System

THE INDUSTRY'S FIRST MULTIMEDIA WHITEBOARD WITH WALK-UP-AND-USE SIMPLICITY.

Experience the advantages of the Impulse LTX System:

- Intuitive use ... literally walk up and start writing; the board senses the touch of the marker and powers itself on. Instinctively project, write, annotate, capture, and recall your notes.
- Panoramic size with high-performance P<sup>3</sup> ceramicsteel™ surface ... allows for free-flowing ideas with enhanced visibility on a surface that is warranted for a lifetime. Available sizes: 4'x8', 4'x12', 5'x8', and 5'x12'.
- Built-in intelligence ... Simple, one-touch buttons enable effortless navigation of the system. No training, no computer, no complicated software, and no pre-meeting setup required; just start writing.



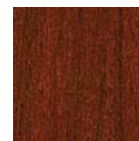
Winter on Maple  
770-0249-00 (EC)  
770-0250-00 (PI)  
-3582



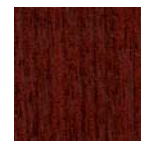
Amber on Maple  
770-0228-00 (EC)  
770-0233-00 (PI)  
-3572



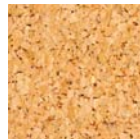
Natural Cherry  
770-0229-00 (EC)  
770-0234-00 (PI)  
-3412



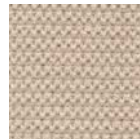
Medium Cherry  
770-0230-00 (EC)  
770-0235-00 (PI)  
-3422



Medium Mahogany  
770-0227-00 (EC)  
770-0232-00 (PI)  
-3772



Natural Cork  
770-0236-00 (PI)



Tundra Camel P370  
770-0251-00 (PI)  
-P370



Tundra Lichen P376  
770-0237-00 (PI)  
-P376



Tundra Midnight P375  
770-0311-00 (PI)  
-P375



Clear Anodized Aluminum  
770-0231-00 (EC)



Dimpled Anodized Aluminum  
770-0239-00 (PI)  
-D4-4799

### Materials & Finishes

The wood and aluminum finishes are available for both the end caps (EC) and panel inserts (PI). Fabric and cork finishes are available for the panel inserts only.

### Custom Materials & Finishes

- Embroider your school or corporate logo onto fabric
- Customer's own material (COM) option

- Matches Steelcase surface number

**POLYVISION™**  
A Steelcase Company

PolyVision Corporation  
4888 S. Old Peachtree Rd.  
Norcross, GA 30071  
1.800.620.POLY  
www.polyvision.com

PolyVision, N.V.  
Zuiderring 56  
3600 Genk, Belgium  
+32 (0)89.32.31.30