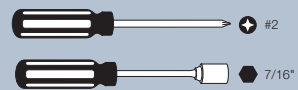
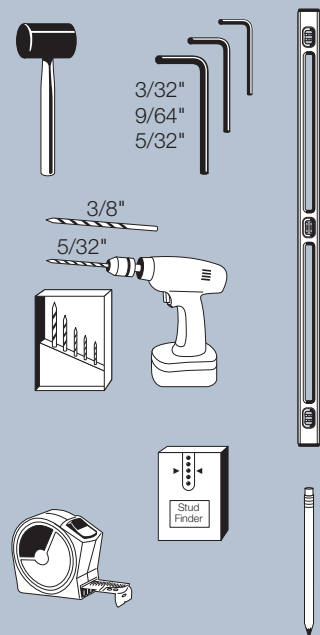


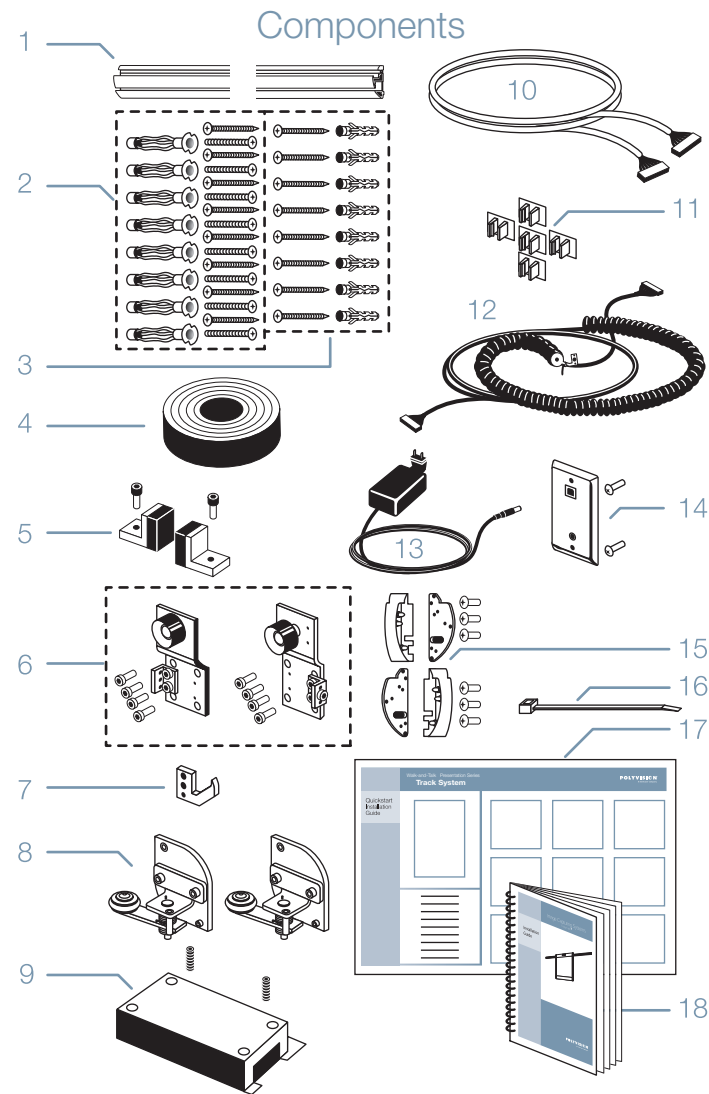
Power & Data Track System

Quickstart Installation Guide

Required Tools

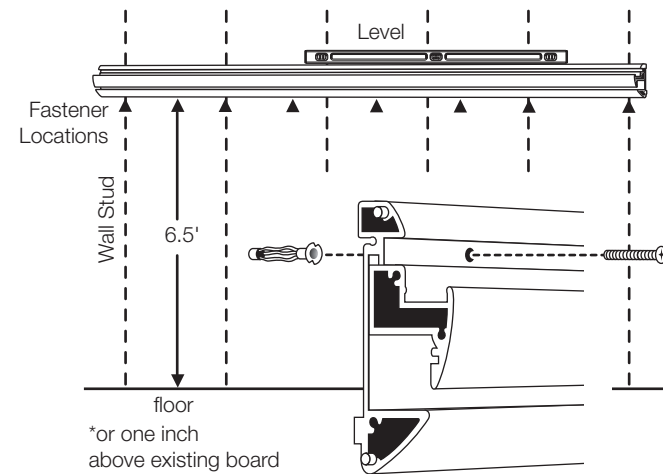


1-800-620-POLY
PN 370-0157-05

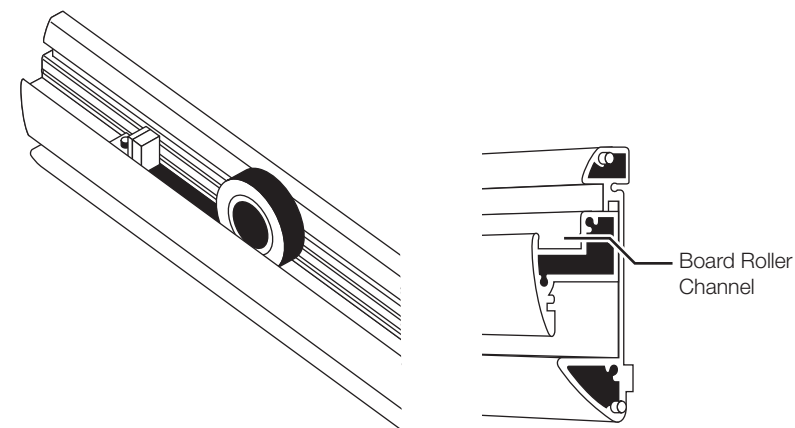


- 1 8 foot (2438 mm) track section
- 2 U.S. version only: eight toggle bolts with eight machine screws, and eight #10-24 x 2 inch flat head sheet metal screws for studs
- 3 U.K. version only: eight steel anchors and eight FH machine screws for concrete walls
- 4 urethane strip
- 5 two foam stops and two #10-32 x 3/8 inch socket head cap screws
- 6 two upper roller assemblies and eight #10-32 socket head screws
- 7 retainer
- 8 two lower roller assemblies
- 9 voltage regulator with two #10-32 set screws
- 10 voltage regulator to main controller board cable
- 11 five self-adhesive cable clips
- 12 coil cable with strain relief coupler
- 13 power supply
- 14 wall plate assembly and two screws
- 15 two end plates, two end caps, and six screws (ordered separately)
- 16 one extra cable tie
- 17 this guide
- 18 installation manual

STEP 1 Secure track to wall- use studs whenever possible



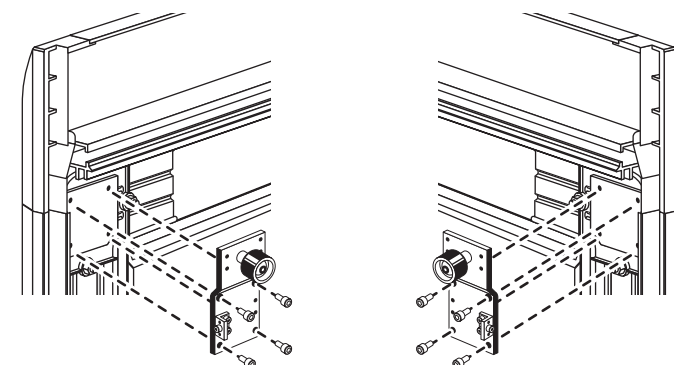
STEP 3 Add urethane strip to roller channel



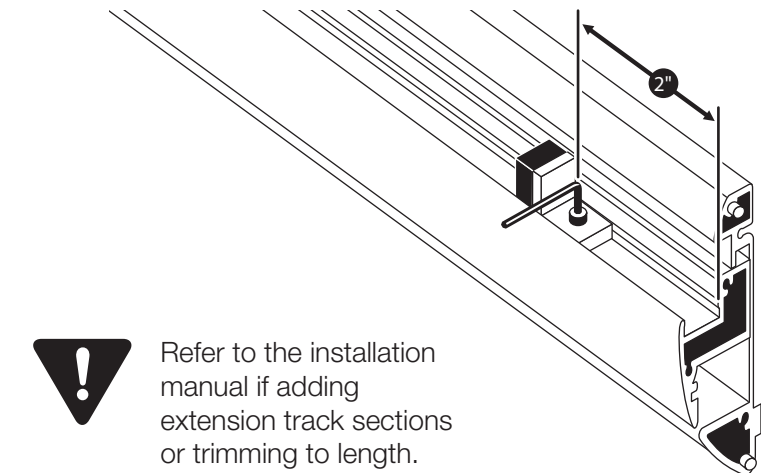
STEP 5 Attach upper roller assemblies



The following steps assume that the power source comes from the left end of the track. If this is not the case, refer to the installation manual from here.

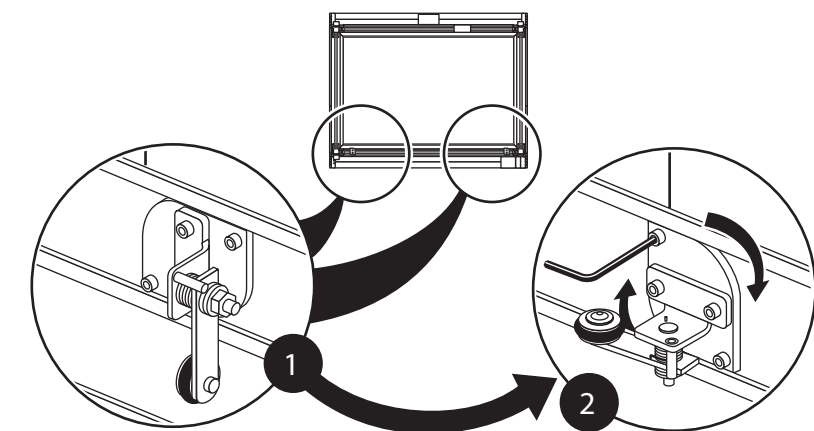


STEP 2 Attach foam stops

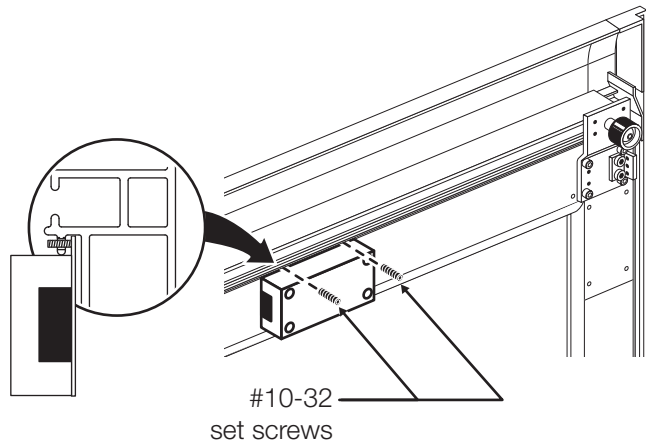


Refer to the installation manual if adding extension track sections or trimming to length.

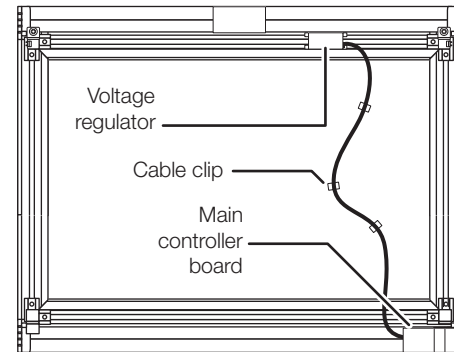
STEP 4 Attach lower roller assemblies



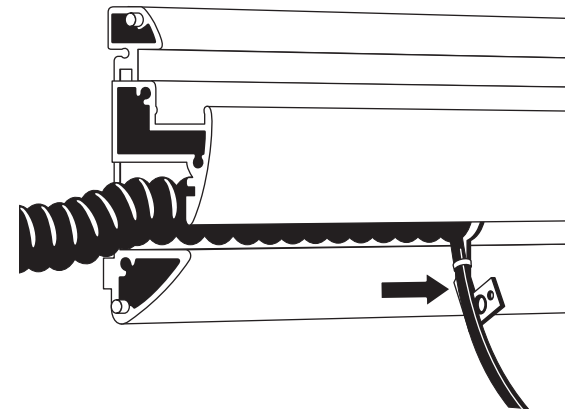
STEP 6 Attach voltage regulator



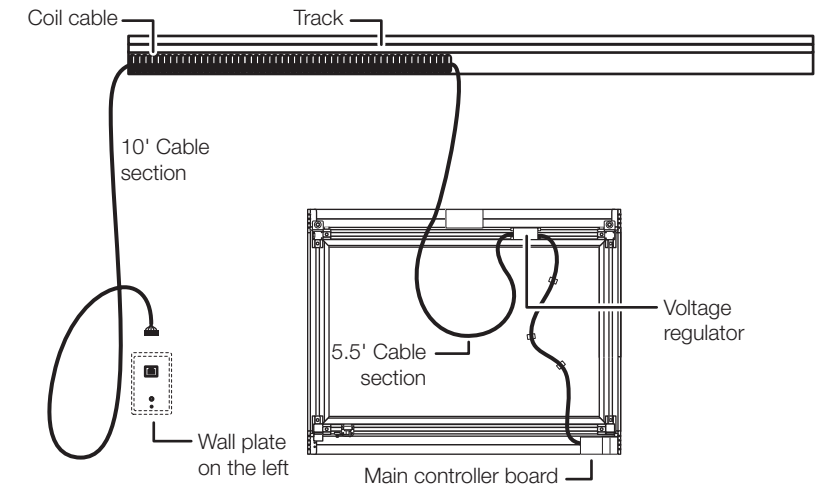
STEP 7 Connect voltage regulator to main controller board



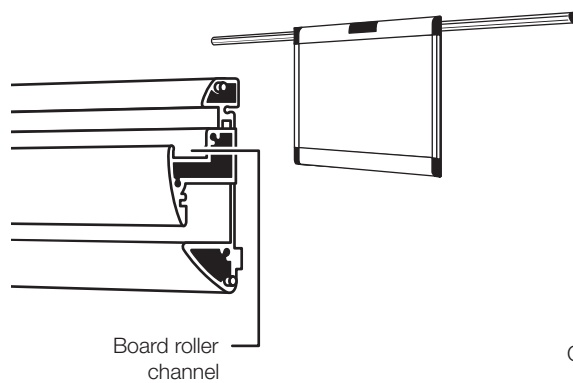
STEP 8 Route the coil cable through the track's coil cable channel



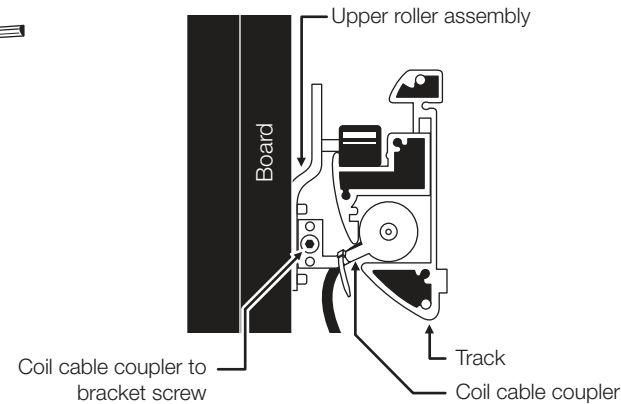
STEP 9 Connect coil cable to voltage regulator



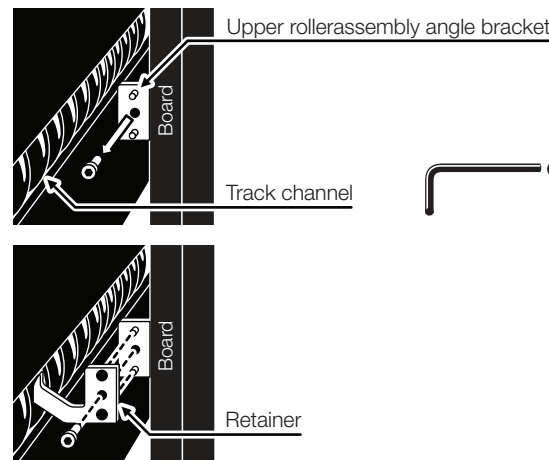
STEP 10 Hang the board on the track



STEP 11 Fasten coil cable to the upper roller assembly

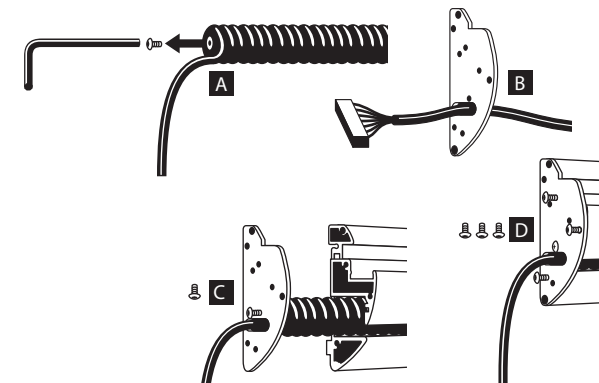


STEP 12 Fasten retainer to the opposite upper roller assembly

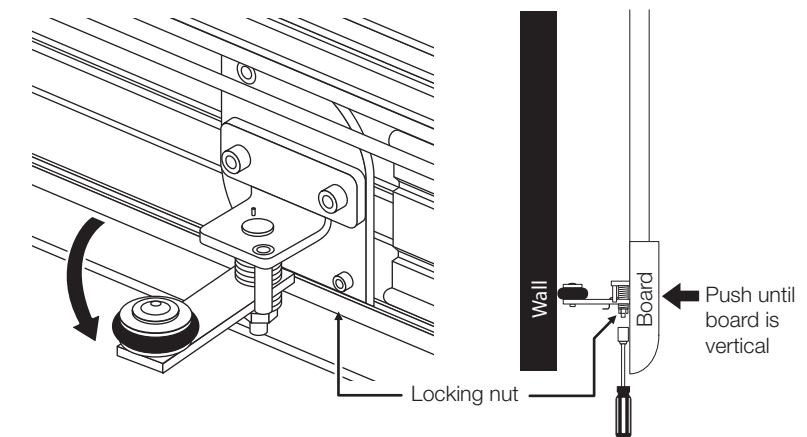


STEP 13

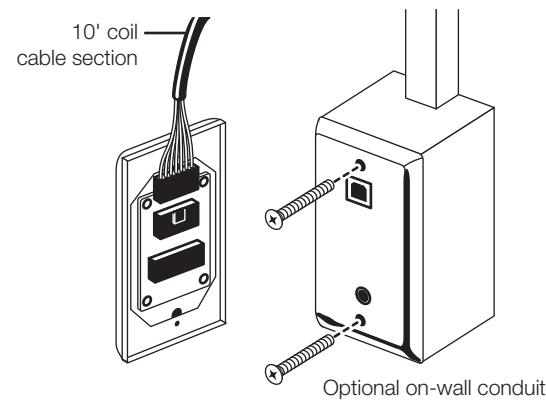
- A** Remove screw from coil cable retainer
- B** Route cable through end plate
- C** Fasten end plate to retainer
- D** Fasten end plate to track



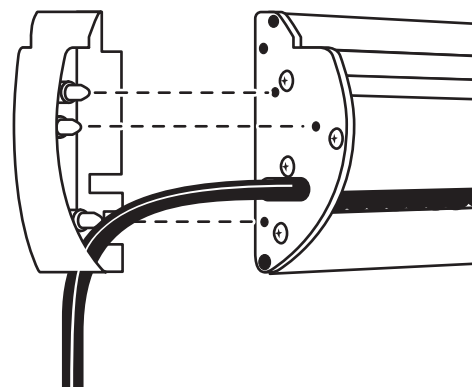
STEP 14 Adjust lower roller



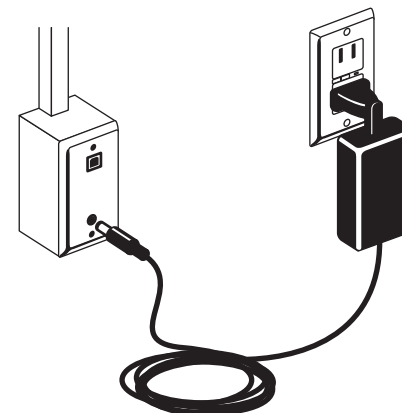
STEP 15 Install wall plate and connect coil cable



STEP 16 Attach end caps



STEP 17 Connect Power



STEP 18 • Install software via PolyKey
• Connect USB cable to wall plate and computer

